



SUPERIOR DETENTION SOLUTIONS

YOUR TURNKEY SOLUTION.

Providing Product and Complete Installation.

WHO IS GREENRISE?

A National Stormwater Compliance Company.

Managing stormwater is what we do, providing the right solution is who we are.

Greenrise is a full-service, turnkey, stormwater infrastructure firm that delivers innovative, reliable and precisely engineered stormwater management systems, engineered media, componentry, and maintenance to the southeast region.

One solution at a time, we are transforming the performance requirements and aesthetic ideas to reduce the impact of development, improve quality of life, and exceed expectations. We offer regionally specific solutions as requirements, regulations, and landscapes vary from one region to the next. Our sustainable solutions include:

- SWPPP Compliance
- SCM Services & Maintenance
- Green Roofs & Amenity Decks
- Bioretention
- Underground Detention
- Environmental Product Supply



PROVIDING PRODUCT INSTALLATION AND SERVICES THROUGHOUT THE SOUTHEAST.

Tennessee | Carolinas | Florida | Texas | Georgia | Alabama | Louisiana

UNDERGROUND DETENTION

Providing Complete Integrated Products & Solutions.

DESIGN

ENGINEERING

PRODUCT SUPPLY

INSTALLATION

MAINTENANCE

OUR APPROACH

Drawing on two decades and 100s of turnkey installations, Greenrise Technologies has a uniquely unrivaled approach to underground stormwater management. Our experience designing, supplying, installing, and maintaining these systems allows us to optimize each project for total installed cost while balancing product performance and lead times.

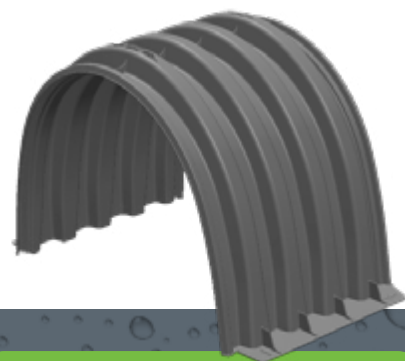
From our turnkey experience, we intimately understand underground stormwater management's technical and logistical challenges. We focus on the desired result and not just the product fit. We start all projects the same way: working to understand the problem and providing a unique, functional, cost-effective solution.

Our MODvault and MODarch solutions can be incorporated into multifunctional designs, while our turnkey installation service creates unmatched efficiency regardless of the specified product. If we don't think our solution best fits the project, we'll be the first to tell you.

Greenrise Underground Detention Products



Greenrise MODvault



Greenrise MODarch

GREENRISE MODvault

DESCRIPTION: The MODvault is a high-capacity water storage solution designed for maximum flexibility for all project types. Manufactured from robust, corrosion-resistant materials, the MODvault ensures durability and minimal maintenance, making it cost-effective. Its modular design allows for easy scalability, enabling users to expand storage capacity without extensive customizations. The MODvault offers straightforward installation with easy-to-assemble components, significantly reducing time and labor costs versus other systems. Suitable for applications like rainwater harvesting, stormwater management, and emergency storage, the MODvault is essential for traditional or low impact development and green infrastructure practices.



APPLICATIONS:

- Residential/Commercial/Industrial
- Stormwater management, detention, retention, infiltration
- Sites with constrained footprints
- Rainwater harvesting
- Emergency overflow storage
- Green infrastructure implementation

PROVIDING PRODUCT INSTALLATION AND SERVICES THROUGHOUT THE SOUTHEAST.

Tennessee | Carolinas | Florida | Texas | Georgia | Alabama | Louisiana

PRODUCT DETAILS

FEATURES & BENEFITS

- Modular, scalable, easy-to-install
- Variable cover heights from 12" minimum
- Stackable for optimized footprint
- Designed for HS-20 and HS-25 live loads
- 19.68" (H) x 22.64" (L) x 22.64" (W)
- 100% recycled materials
- Chemically inert, unaffected by biological factors and soil/water-borne chemicals



SPECIFICATIONS

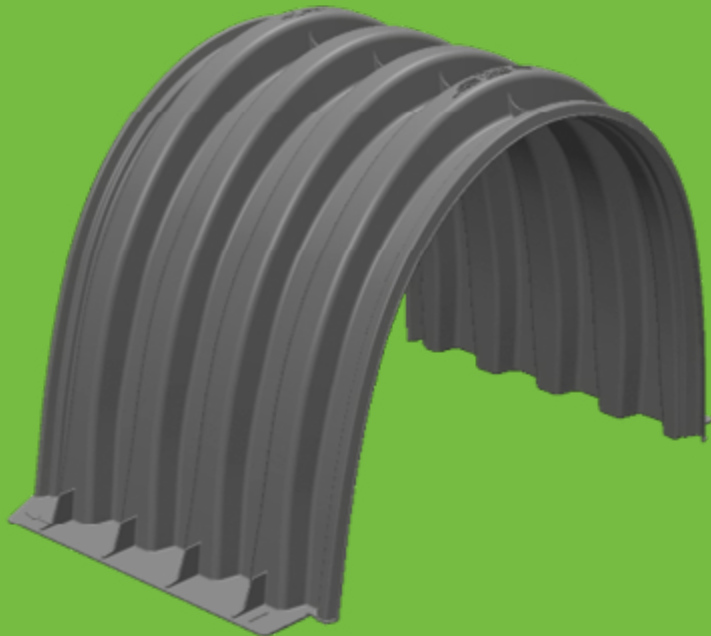
MODULE	VOID RATIO	GROSS VOLUME	NET VOLUME	HS-20 MINIMUM COVER	HS-25 MINIMUM COVER
Standard (SD)	95%	5.838cf	5.546cf	18"	24"
Heavy Duty (HD)	93.9%	5.838cf	5.482cf	12"	18"

GREENRISE MODarch

DESCRIPTION: The MODarch is an arch-style stormwater management system manufactured from innovative composite materials. Ideal for shallow sites that are not tightly constrained by available footprint. With a wide range of system heights and cover requirements, MODarch can be optimized to cost-effectively and efficiently fit your project.

MODarch can be outfitted with a main header row to filter the initial stormwater runoff entering the system to improve performance and reducing long-term maintenance costs.

Ideal for applications such as rainwater harvesting, stormwater management, and emergency storage, the MODarch is a go to solution for both traditional development and low impact development, as well as green infrastructure practices.



APPLICATIONS:

- Residential/Commercial/Industrial
- Stormwater management, detention, retention, infiltration
- Sites with flexible allowable footprint
- Regions with low-cost stone backfill

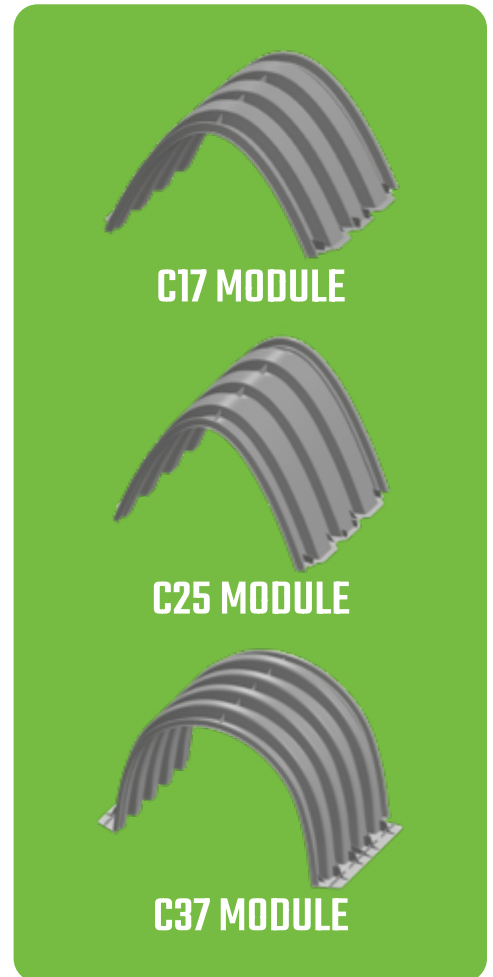
PROVIDING PRODUCT INSTALLATION AND SERVICES THROUGHOUT THE SOUTHEAST.

Tennessee | Carolinas | Florida | Texas | Georgia | Alabama | Louisiana

PRODUCT DETAILS

FEATURES & BENEFITS

- Modular, scalable, easy-to-install
- Variable cover heights from 18" minimum
- Designed for HS-20 live loads
- Exceeds specifications of ASTM F2418, F2787, and AASHTO LRFD Section 12
- Multiple product size options for optimized design
- Premium, composite materials for added safety factor
- Can be installed with a main header row for water quality



SPECIFICATIONS

MODULE	INSIDE HEIGHT	CHAMBER STORAGE WITHOUT STONE	CHAMBER STORAGE WITH STONE ¹	STORAGE / LINEAR FOOT	STORAGE/ LINEAR FOOT WITH STONE	HS-20 MINIMUM COVER ²
C17	17.5"	5.6cf	11.36cf	2.27cf/ft	4.61cf/ft	18"
C25	25"	9.8cf	17.45cf	3.98cf/ft	7.08cf/ft	18"
C37	37"	27.8cf	42.07cf	10cf/ft	16.74cf/ft	18"

1. 6" above, below and between chambers, with 40% stone porosity
 2. 18" cover is to top of pavement. 24" cover required for unpaved vehicular applications



Tennessee | Carolinas | Florida | Texas | Georgia | Alabama | Louisiana

629.230.2150 | www.greenrisetech.com