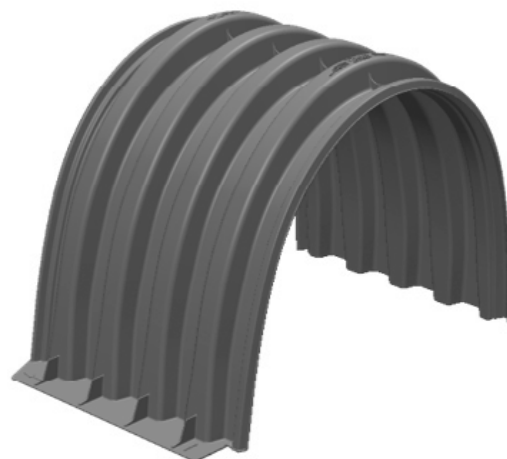


PRODUCT SPECIFICATION

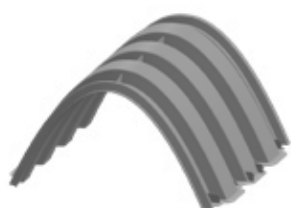
MODarch

The MODarch is an arch-style stormwater management system manufactured from innovative composite materials. Ideal for shallow sites that are not tightly constrained by available footprint. With a wide range of system heights and cover requirements, MODarch can be optimized to cost-effectively and efficiently fit your project.

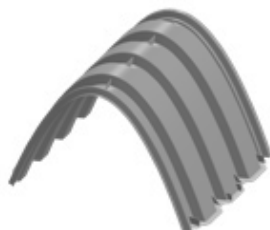
MODarch can be outfitted with a main header row to filter the initial stormwater runoff entering the system to improve performance and reducing long-term maintenance costs.



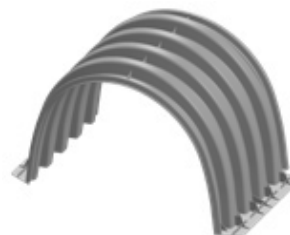
Ideal for applications such as rainwater harvesting, stormwater management, and emergency storage, the MODarch is a go to solution for both traditional development and low impact development, as well as green infrastructure practices.



C17 MODULE



C25 MODULE



C37 MODULE

MODULE	INSIDE HEIGHT	CHAMBER STORAGE WITHOUT STONE	CHAMBER STORAGE WITH STONE ¹	STORAGE / LINEAR FOOT	STORAGE/ LINEAR FOOT WITH STONE	HS-20 MINIMUM COVER ²
C17	17.5"	5.6cf	11.36cf	2.27cf/ft	4.61cf/ft	18"
C25	25"	9.8cf	17.45cf	3.98cf/ft	7.08cf/ft	18"
C37	37"	27.8cf	42.07cf	10cf/ft	16.74cf/ft	18"

1. 6" above, below and between chambers, with 40% stone porosity

2. 18" cover is to top of pavement. 24" cover required for unpaved vehicular applications