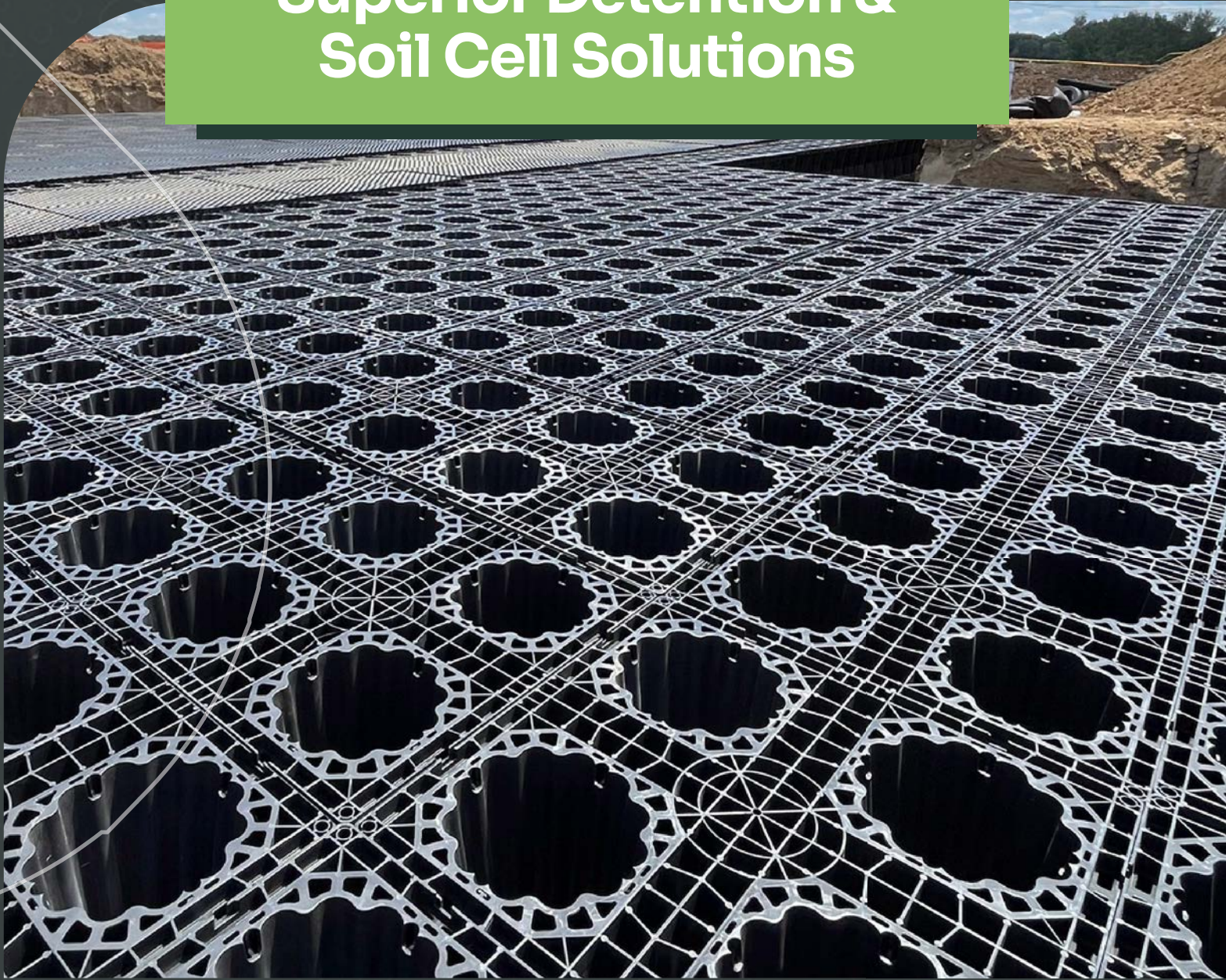




Superior Detention & Soil Cell Solutions



YOUR TURNKEY SOLUTION
Providing Product and Complete Installation.

One Idea. One Raindrop. One Greenrise.

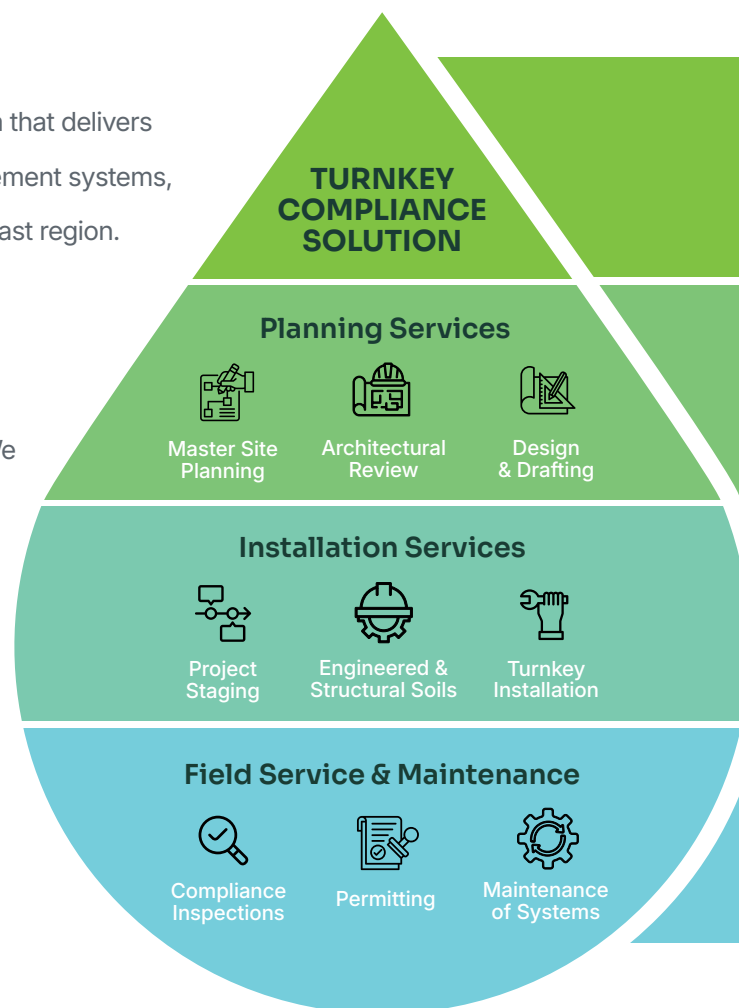
A National Stormwater Compliance Company.

Managing stormwater is what we do.
Providing the right solution is who we are.

Greenrise is a full-service, turnkey, stormwater infrastructure firm that delivers innovative, reliable and precisely engineered stormwater management systems, engineered media, componentry, and maintenance to the southeast region.

One solution at a time, we are transforming the performance requirements and aesthetic ideas to reduce the impact of development, improve quality of life, and exceed expectations. We offer regionally specific solutions as requirements, regulations, and landscapes vary from one region to the next. Our sustainable solutions include:

- **SWPPP Compliance**
- **SCM Services & Maintenance**
- **Green Roofs & Amenity Decks**
- **Bioretention**
- **Underground Detention & Soil Cell Systems**
- **Environmental Product Supply**



Providing Product Installation and Services Throughout the Southeast.

TENNESSEE | CAROLINAS | FLORIDA | TEXAS | GEORGIA | ALABAMA | LOUISIANA

Stormwater Storage & Soil Cells

Providing Complete Integrated Products & Solutions.

OUR APPROACH

Drawing on two decades and 100s of turnkey installations, Greenrise Technologies has a uniquely unrivaled approach to underground stormwater and urban tree root management. Our experience designing, supplying, installing, and maintaining these systems allows us to optimize each project for total installed cost while balancing product performance and lead times.

From our turnkey experience, we intimately understand stormwater storage and tree root infrastructure's technical and logistical challenges. We focus on the desired result and not just the product fit. We start all projects the same way: working to understand the problem and providing a unique, functional, cost-effective solution.

Our MODvault, MODarch, and MODroot solutions can be incorporated into multifunctional designs, while our turnkey installation service creates unmatched efficiency regardless of the specified product. If we don't think our solution best fits the project, we'll be the first to tell you.

Design

Engineering

Product Supply

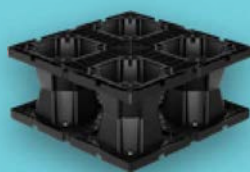
Installation

Maintenance

Underground Detention & Soil Cell Products



MODvault



MODvault Mini



MODarch



MODroot

Underground Detention

MODvault™

MODvault is a high-capacity water storage solution designed for maximum flexibility for all project types.

Manufactured from robust, corrosion-resistant materials, MODvault ensures durability and minimal maintenance, making it cost-effective. Its modular design allows for easy scalability, enabling users to expand storage capacity without extensive customizations. MODvault offers straightforward installation with easy-to-assemble components, significantly reducing time and labor costs versus other systems. Suitable for applications like rainwater harvesting, stormwater management, and emergency storage, MODvault is essential for traditional or low impact development and green infrastructure practices.



APPLICATIONS

- Residential/Commercial/Industrial
- Stormwater management, detention, retention, infiltration
- Sites with constrained footprints
- Rainwater harvesting
- Emergency overflow storage
- Green infrastructure implementation

Providing Product Installation and Services Throughout the Southeast.

TENNESSEE | CAROLINAS | FLORIDA | TEXAS | GEORGIA | ALABAMA | LOUISIANA

Product Details

Features & Benefits

- Modular, scalable, easy-to-install
- Variable cover heights from 12" minimum
- Stackable for optimized footprint
- Designed for HS-20 and HS-25 live loads
- Module footprint: 22.64" (L) x 22.64" (W)
- 100% recycled materials
- Chemically inert, unaffected by biological factors and soil/water-borne chemicals



Specifications

MODULE	MODULE HEIGHT	VOID RATIO	GROSS VOLUME	NET VOLUME	HS-20 MINIMUM COVER	HS-25 MINIMUM COVER
Standard (SD)	19.68"	95%	5.84ft ³	5.55ft ³	18"	24"
Heavy Duty (HD)	19.68"	93.9%	5.84ft ³	5.45ft ³	12"	18"
Mini (SD)	9.84"	92.3%	2.92ft ³	2.69ft ³	18"	24"
Mini (HD)	9.84"	91.5%	2.92ft ³	2.67ft ³	12"	18"

Underground Detention

MODarch™

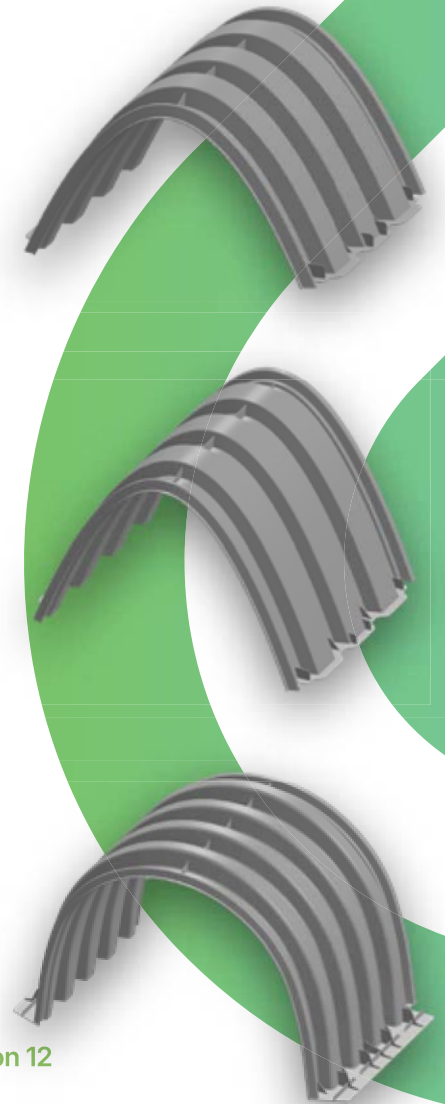
MODarch delivers high-performance underground stormwater storage with a lightweight composite arch design. Its versatile heights and minimal cover requirements make it a smart choice for shallow and space-limited sites. Filter options help remove pollutants at the entry point, supporting long-term system efficiency. From stormwater detention to rainwater reuse, MODarch is an adaptable solution for sustainable development.

APPLICATIONS

- Residential/Commercial/ Industrial
- Stormwater management, detention, retention, infiltration
- Sites with flexible allowable footprint
- Regions with low-cost stone backfill

FEATURES & BENEFITS

- Modular, scalable, easy-to-install
- Variable cover heights from 18" minimum
- Designed for HS-20 live loads
- Exceeds specifications of ASTM F2418, F2787, and AASHTO LRFD Section 12
- Multiple product size options for optimized design
- Premium, composite materials for added safety factor
- Can be installed with a main header row for water quality



Specifications

MODULE	INSIDE HEIGHT	CHAMBER STORAGE WITHOUT STONE	CHAMBER STORAGE WITH STONE ¹	STORAGE / LINEAR FOOT	STORAGE / LINEAR FOOT WITH STONE	HS-20 MINIMUM COVER ²
C17	17.5"	5.6ft ³	11.36ft ³	2.27ft ³ /ft	4.61ft ³ /ft	18"
C25	25"	9.8ft ³	17.45ft ³	3.98ft ³ /ft	7.08ft ³ /ft	18"
C37	37"	27.8ft ³	42.07ft ³	10ft ³ /ft	16.74ft ³ /ft	18"

1. 2.6" above, below and between chambers, with 40% stone porosity

2. 18" cover is to top of pavement. 24" cover required for unpaved vehicular applications

Soil Cell Systems

MODroot™

MODroot is a modular soil cell system engineered to create healthy rooting environments beneath paved surfaces. By preserving uncompacted soil volume and enabling on-site stormwater infiltration, MODroot helps trees thrive in even the most urbanized settings. Built to support load-bearing applications, it seamlessly integrates into streetscapes, plazas, and parking areas while contributing to community resiliency and sustainability goals.



APPLICATIONS

- Street trees, sidewalks, and urban plazas
- Parking lots and commercial sites
- Low impact development and green infrastructure
- Stormwater quality enhancement and infiltration

FEATURES & BENEFITS

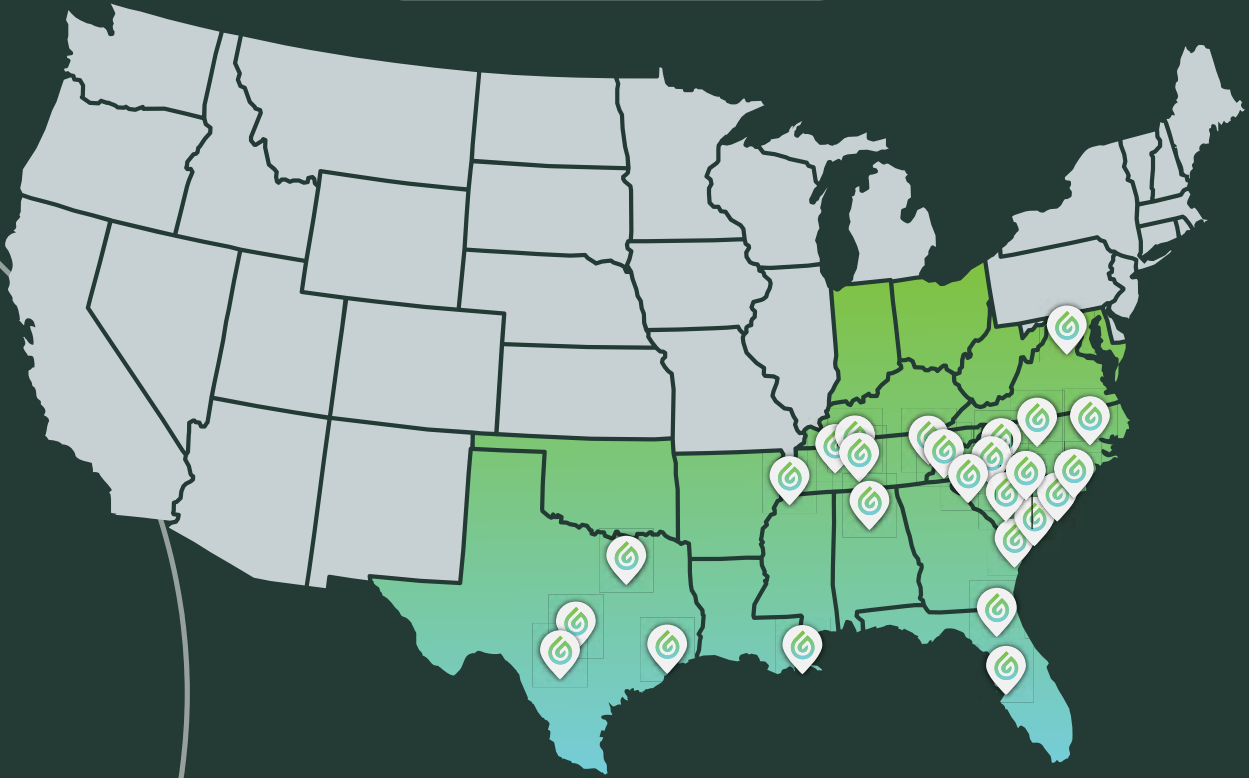
- Modular, scalable layout
- HS-20 load-bearing pavement support
- Preserves uncompacted soil for healthy root growth
- Enhances infiltration and runoff quality
- Helps meet soil volume and green infrastructure requirements
- Utility-friendly and compatible with varied surface materials
- Fast installation and low maintenance with durable components



Specifications

MODULE	VOID RATIO	GROSS VOLUME	NET VOLUME	HS-20 MIN. COVER
MODroot	95.5%	5.84ft ³	5.58ft ³	12"

Locations & Service Areas



Providing Product Installation and Services Throughout the Southeast.

TENNESSEE | CAROLINAS | FLORIDA | TEXAS | GEORGIA | ALABAMA | LOUISIANA



629.230.2150 | [Greenrise.com](https://www.Greenrise.com)